



AeroFrohne

UEI: GQLDC3VLXA53 | CAGE: 9XZJ0

NAICS: 541512, 541810, 541430, 541370, 541922

About Us

Founded in 2020 A.D, AeroFrohne provides AI inspections, architectural 3D renderings, 2D elevation colorization, masterplans, photography, BIM/CAD, architectural animations, videography services, 360° LiDAR, 2D/3D floor plans, aerial 2D orthomosaics, orthofacades, OGI Methane Detection, 3D modeling, site plan colorization, aerial 360° imagery with property lines, 3D floor plans, boundary surveys, aerial interactive 360° panos, 3D renders, artificial intelligence, machine learning, deep learning analyses, and roof reports

AeroFrohne Portfolio

[Click Here](#)

Use Cases:

- AI, Machine Learning & Deep Learning Analyses
- Residential and Commercial Development
- Construction
- Energy (Solar, Wind, Oil/Gas)
- Government Agencies
- Real Estate
- Telecommunications
- Transportation Planning

Software

Sketchup, Revit, Autodesk 3ds max, lumion, AutoCAD, v-ray
RTK/GNSS, advanced autonomous flight software, Adobe PhotoShop, Adobe Lightroom, Premiere Pro, After Effects, Flight, ArchiCAD, AI, Python, Machine Learning, Deep Learning





Derrick Frohne

Founder

Derrick began his professional career as an FAA Part 107-certified pilot, securing multiple FAA Certificates of Authorization (COAs) to provide specialized aerial drone services near military bases and airports in coordination with the FAA and the U.S. Military.

This expertise, combined with his talent for photography, architecture, and design laid the foundation for his business, AeroFrohne. Derrick's commitment to excellence and innovation quickly distinguished him in the competitive fields of AI, machine learning, deep learning, architecture, engineering, construction, and real estate with over 588 logged flight hours.

Today, Derrick Frohne is celebrated for his remarkable work as the Founder of AeroFrohne and Visit Coastal Texas. His keen eye for detail and dedication to his craft enable him to deliver top-notch visual content that meets the diverse needs of his clients. He's registered with the GSA National Artist Registry and recently awarded government contracts with TIPS & ESC 19.

Current and past clients/projects: BPX Energy, Marathon Oil (Precision Hawk), DHRP, Zar Capital, Blackhawk Real Estate Partners, KW Commercial, COTA Car Condos, Evolve, Mitsubishi, National Land, Rent.com, OneSource, KB Team, E-Cash Offer, B+E, KB Home, M/I Homes, Brava Realty, Vince Young Realty, Talon, White Ark Construction, Vacasa, CLK Architects & Associates, Versal Partners, First Houston Properties, Airbnb, TIPS, ESC 19 Government Cooperatives, Compass Land Advisors, Verizon, IDS, Stewart Development, and various real estate agents





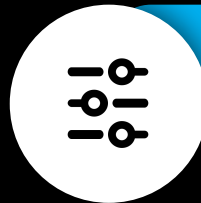
Solution

Flying higher towards a better future



Innovate

Utilizing drone technology for contact-free support and architectural services including coordination with U.S Military & FAA for aerial data collection in restricted airspace



Customize

Automated flight patterns with RGB & thermal, photo/video editing, and 3D rendering



Optimize

Enhanced visualization beyond the human eye



3D Rendering



[Click For 3D Rendering Projects](#)





AWARDED VENDOR

Government Contract Vehicles





Google Earth 3D Render Integration





Photography & Photo Editing





OGI Methane Detection





Aerial 2D Ortho + AI Detection Mapping





Custom Virtual 3D Tours



James Magil

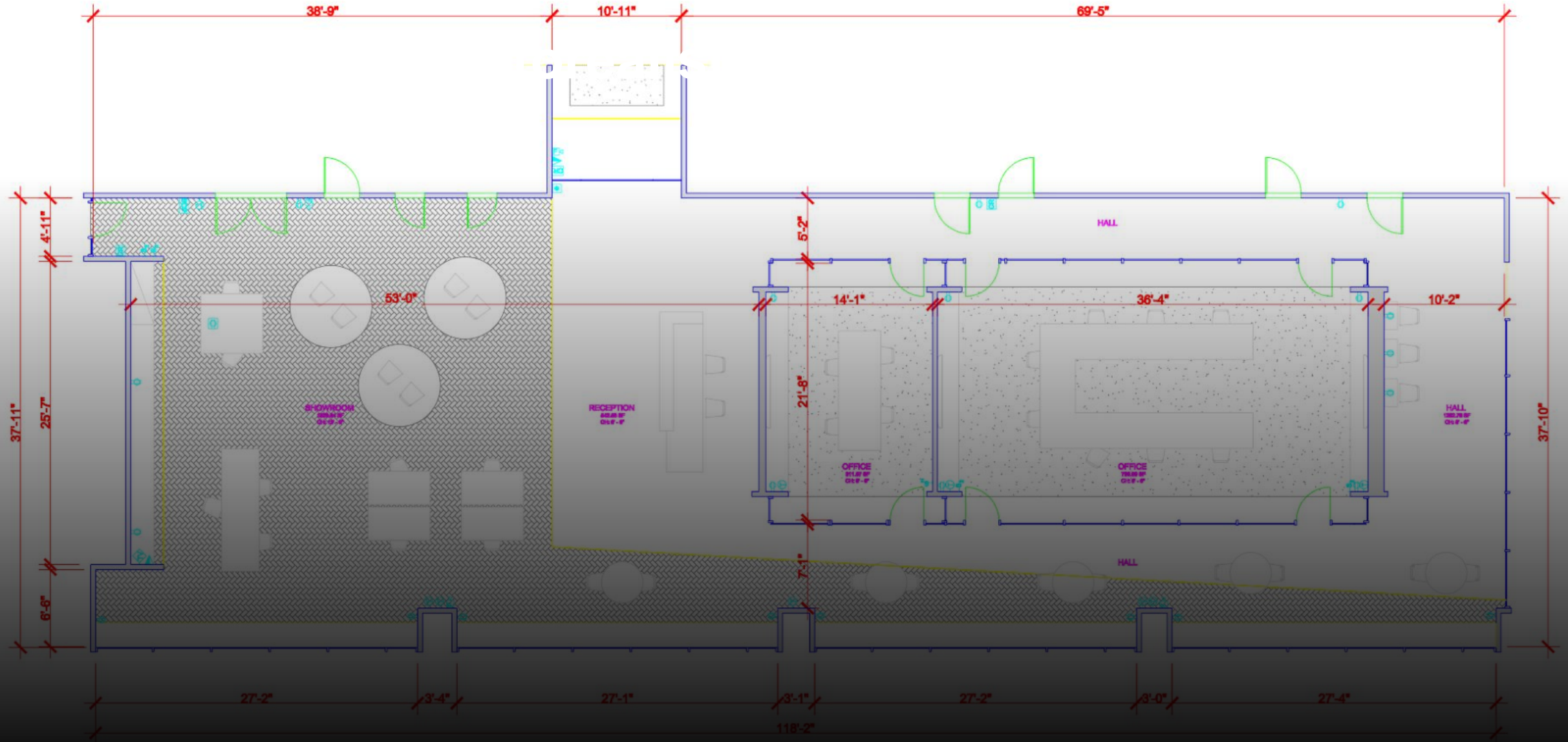
DHRP Inc.

(361) 425-1112

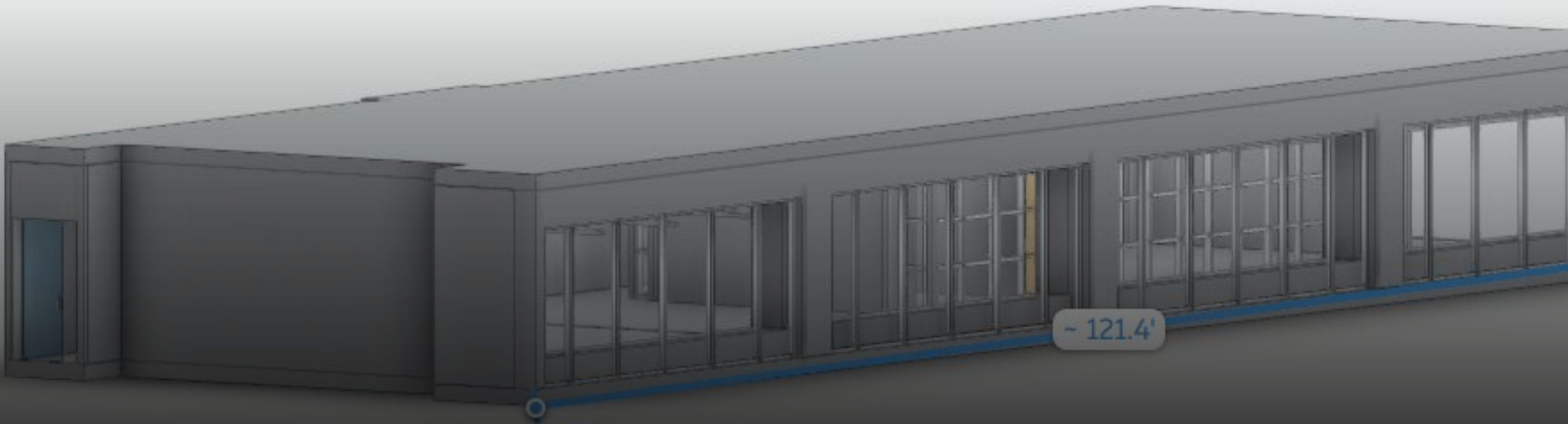
jmagill@dhrp.us



360° LiDAR Scan to CAD



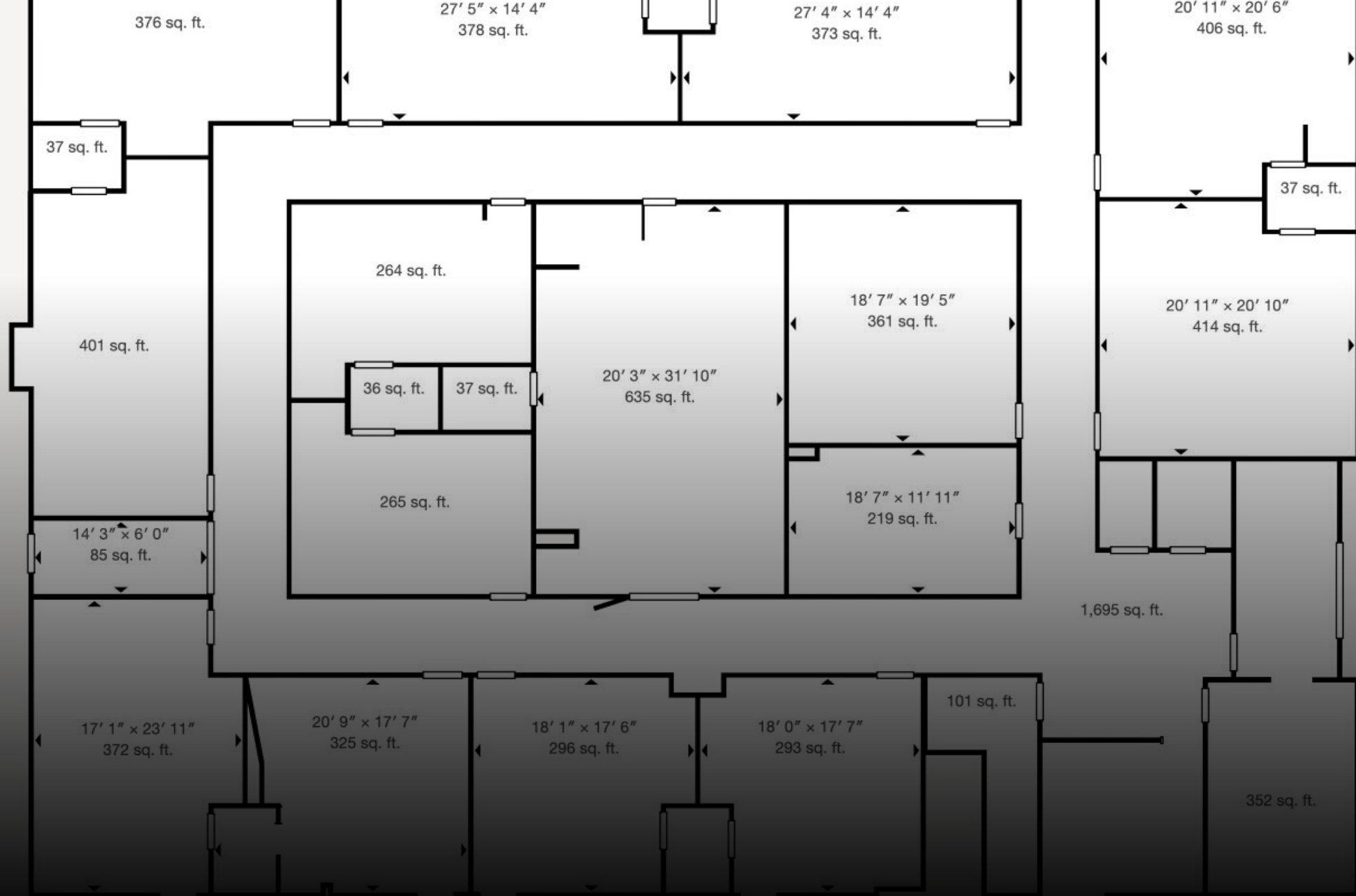
360° LiDAR Scan to BIM





LiDAR+RGB 3D Map With Measurements





Property Report from LiDAR + RGB





3D Floor Plans



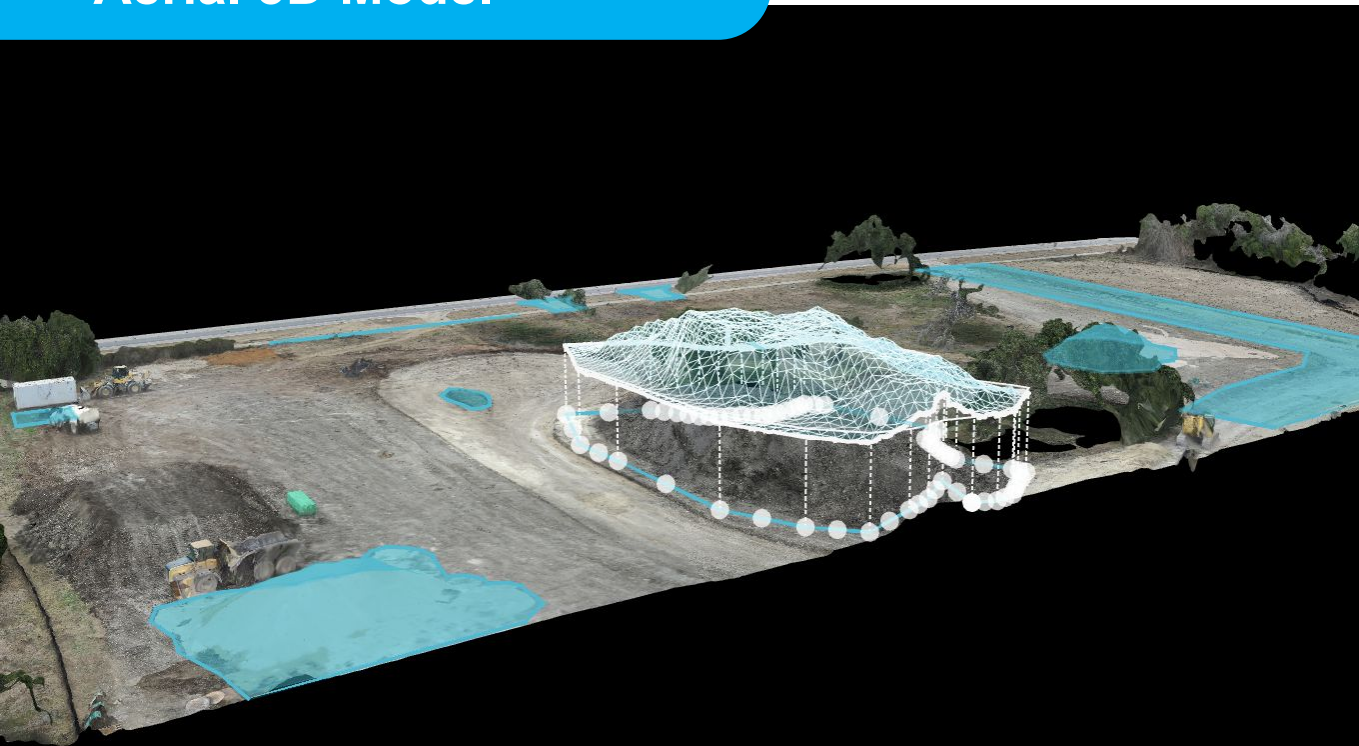
An aerial photograph of a vast, flat landscape under a dramatic sunset sky. The sky is filled with soft, colorful clouds in shades of orange, pink, and purple. The ground is covered in dense green vegetation, likely a wetland or marsh. A small, irregular pond is visible in the middle-left portion of the image. In the distance, a few small buildings and a road are visible on the horizon. The overall scene is serene and expansive.

Commercial Land Development Services





Aerial 3D Model



Pre-Bid/Construction

Estimates & Bid Process

- Concept & design
- Site Planning & procurement
- Volume & area calculation estimating materials which helps in budgeting and resource planning
- Photogrammetric surveys can be used to monitor construction progress

Construction

Earthworks

- Cut/fill analysis
- Stockpile measurements

Track Site Progress

- Compare as-designed versus as-builts

Site Planning

- Safety planning & slope
- Economic & logistics planning
- Transportation planning

Agriculture

- Calculate surface runoff
- Plan drainage and irrigation



+1.72e7 LiDAR Canopy Height Model with Detected Trees



Mounted Device (Sensor/Camera)

4. STRUCTURAL ASSESSMENT
■ Excellent □ Good □ Fair □ Poor
- Vertical Alignment: Excellent
- Base Stability: Strong
- Surface Condition: New/Excellent
- Soil Condition: Stable

5. DEFECT ANALYSIS
- Wood Decay: None
- Splits/Cracks: None
- Hardware: New condition
- Base Erosion: None

6. MAINTENANCE PRIORITY
□ Emergency □ High □ Normal ■ Low

7. COMPLIANCE STATUS
■ Meets Standards
□ Minor Violations
□ Major Violations

Inspector Notes:
- New/recently installed pole
- Minimal equipment configuration
- Excellent structural condition
- No immediate maintenance needed



AI Utility Pole Inspection



Facial Detection
Estimated Authenticity: 95.00%



Noise Pattern Analysis
Estimated Authenticity: 98.78%



Deep Fake Detection



+1.72e7

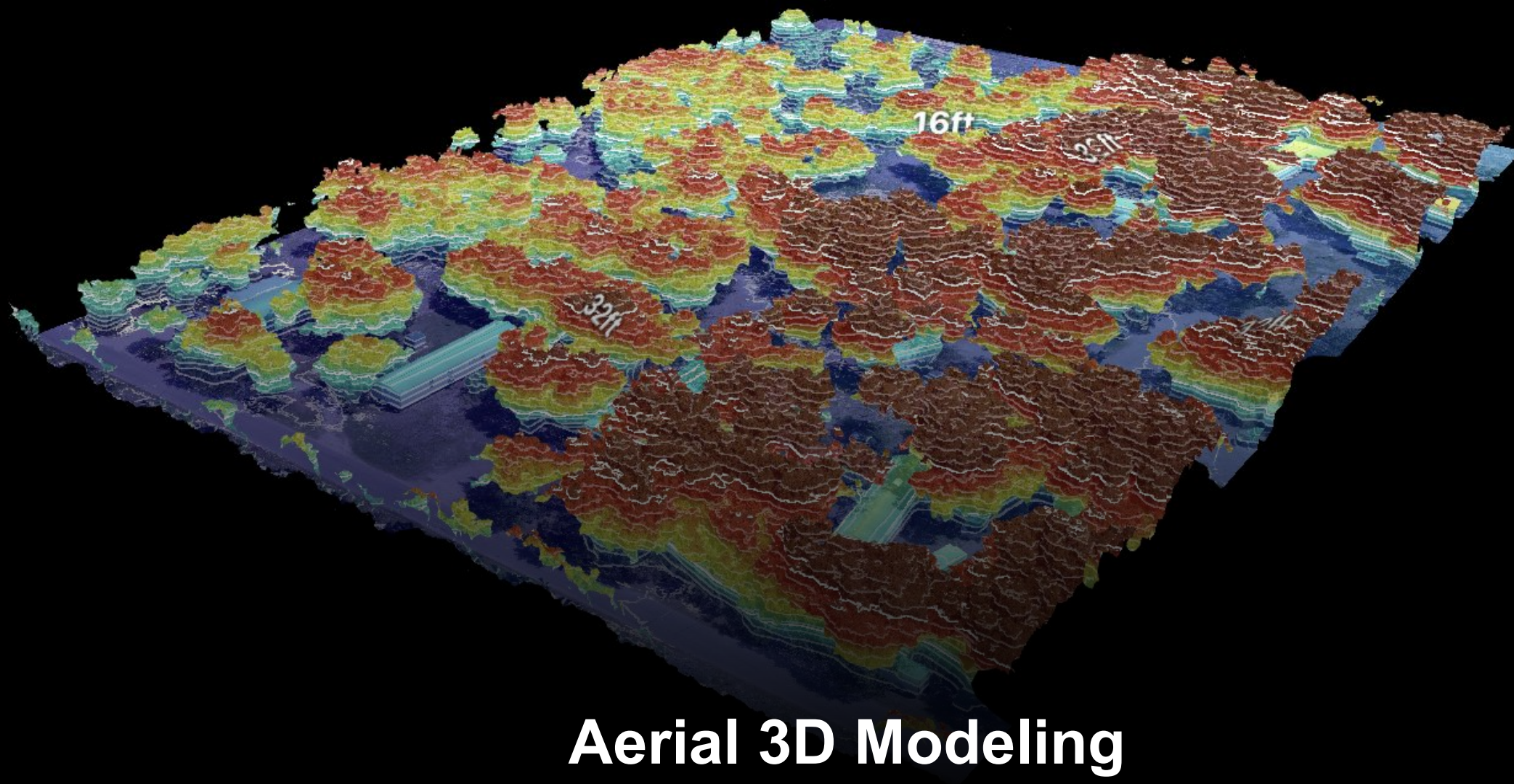
Detected Trees Distribution (36975 points.las)\nNumber of trees detected: 4753

Trees detected: 4753

coordinate

AI + Deep + Machine Learning Analysis
Services





Aerial 3D Modeling Services





Aerial Image 3D Model/Render Integration



Industry Outcomes

AEC



251
assignments

Retail



10
assignments

Real Estate/Property
Management



105
assignments

